



AVK DOUBLE ECCENTRIC BUTTERFLY VALVE, PN10

756/122-243

Stainless steel seat, actuator flange, IP68 gearbox w. position indicator and handwheel, plate disc, long, DN800

AVK double eccentric butterfly valves are designed with tilted and fixated disc for extended service life and easy operation. The disc seal is made of AVK's drinking water approved EPDM rubber featuring an excellent compression set and thus ability to regain its original shape. The GSK approved epoxy coating and the corrosion protected shaft end zones ensure high durability. The valves are suitable for bi-directional application.

Product description:

Double eccentric butterfly valve to EN 593 with stainless steel seat and IP68 gearbox with actuator flange and handwheel; for drinking water and neutral liquids to max. 70°C

Standards:

- Designed according to EN 593
- Face-to-face dimension according to EN 558 Table 2 Basic Series 14
- Standard flange drilling to EN1092-2 (ISO 7005-2), PN10/16

Test/Approvals:

- Approved according to KIWA Certificate K 6320 (DN 700-800 only)
- Approved according to WRAS Certificate No. 2307007
- Hydraulic test according to EN 1074-1 and 2 / EN 12266

Features:

- The tilted disc releases the compression of the disc sealing after a few degrees of opening, which extends the durability and gives low operating torques
- The disc is fixated to prevent wear and fluttering
- The disc seal profile and rubber quality ensure low closing torques
- All rubber parts are multi approved
- Seal retainer ring of stainless steel
- The threaded bolt holes in the disc are corrosion protected with O-rings
- Replaceable seat ring of stainless steel pressed into the body and sealed with an O-ring
- Shaft of stainless steel with self-lubricating bearings
- The shaft ends are fully encapsulated in the disc and are fixed with dowels corrosion protected with O-rings and a stainless steel security plate. Key and keyway as backup
- Replaceable shaft sealing with two EPDM O-rings on each side of a bronze bushing, and a flat NBR gasket
- Body and disc of ductile iron with fusion bonded epoxy coating in compliance with DIN 3476 part 1 and EN 14901, GSK approved, RAL 5017, according to WRAS-DVGW/W270/UBA

Accessories:

Electric actuator, extension spindle, street cover, dismantling joint and flange adaptor



kiwa

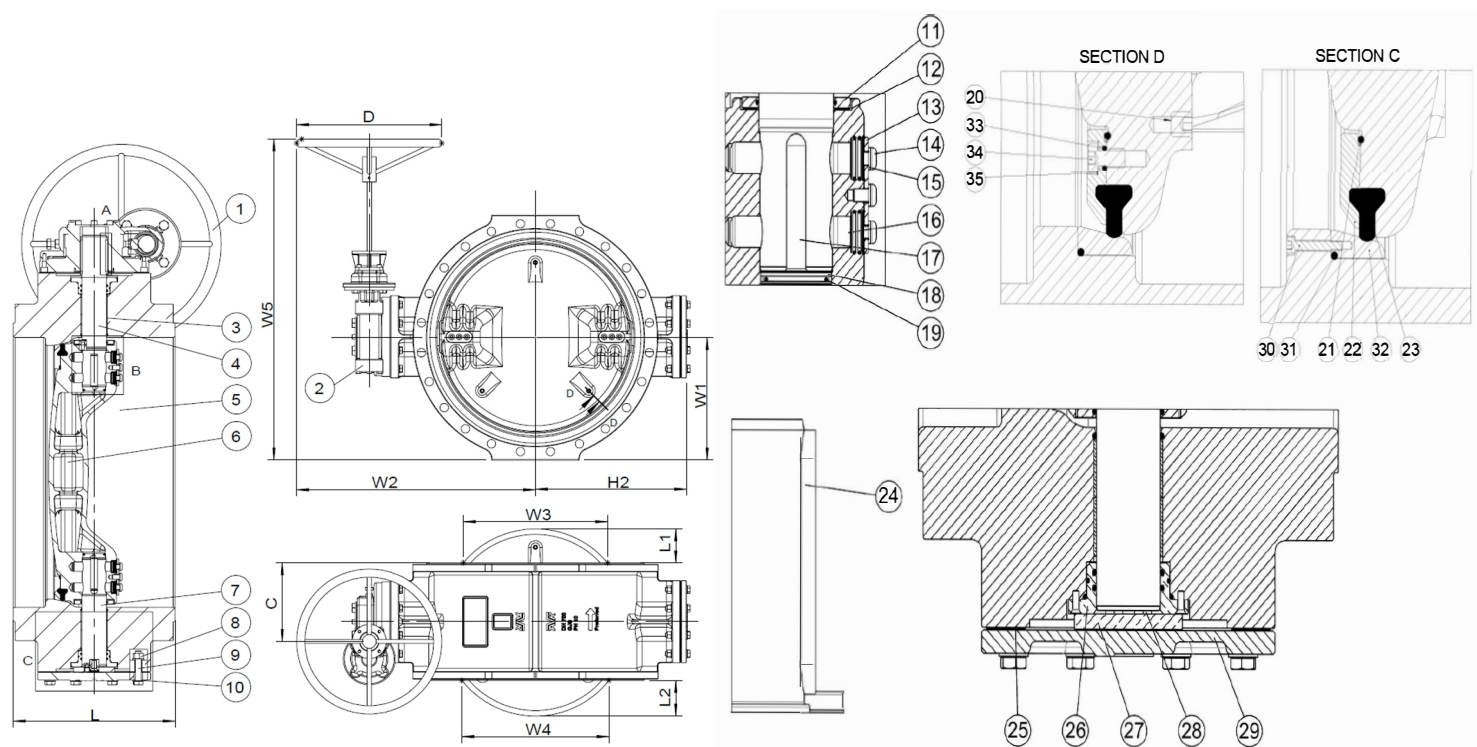
Expect... **AVK**

The designs, materials and specifications shown are subject to change without notice. This is due to the continuous development of our product programme.

AVK DOUBLE ECCENTRIC BUTTERFLY VALVE, PN10

756/122-243

Stainless steel seat, actuator flange, IP68 gearbox w. position indicator and handwheel, plate disc, long, DN800



Component list:

1. Handwheel	Steel	18. Plug	Steel
2. Gearbox	Cast iron	19. O-ring	EPDM rubber
3. Radial bearing	Bronze / PTFE composite	20. Set screw	Stainless steel A4
4. Drive shaft	Stainless steel 1.4057 (431)	21. O-ring	EPDM rubber
5. Body	Ductile iron GJS-500-7 (GGG-50)	22. Retainer ring	Stainless steel 1.4401 (316)
6. Disc	Ductile iron GJS-500-7 (GGG-50)	23. Seal	EPDM rubber
7. Stub shaft	Stainless steel 1.4057 (431)	24. Key	Stainless steel A4
8. Nut	Stainless steel A4	25. Gasket	EPDM rubber
9. Bolt	Stainless steel A4	26. Seal housing	Bronze
10. Washer	Stainless steel A4	27. Bearing	Bronze
11. End cover	Stainless steel 1.4057 (431)	28. Set screw	Stainless steel A4
12. Gasket	EPDM rubber	29. End plate	Ductile iron GJS-500-7 (GGG-50)
13. Security plate	Stainless steel 1.4057 (431)	30. Screw	Stainless steel A4
14. Bolt	Stainless steel A4	31. O-ring	EPDM rubber
15. Washer	Zinc	32. Seat ring	Stainless steel 1.4401 (316)
16. Pin	Stainless steel A4	33. O-ring	EPDM rubber
17. Safety key	Stainless steel A4	34. Bolt	Stainless steel A4
		35. Washer	Stainless steel A4

Components may be substituted with equivalent or higher class materials without prior notification.

Reference nos. and dimensions:

AVK ref. no.	DN	Flange	L	L1	L2	H2	W1	W2	W3	W4	W5	C	D	Actuator	Theoretical
	mm	drilling	mm	mm	mm	mm	mm	mm	mm	mm	mm	mm	mm	Flange	weight/kg
756-0800-1-04022013	800	PN10	470	156	162	620	508	970	627	636	1227	349	600	F10	703

The designs, materials and specifications shown are subject to change without notice. This is due to the continuous development of our product programme.